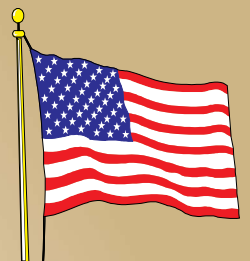


Building
AMERICA'S
Future... Today!

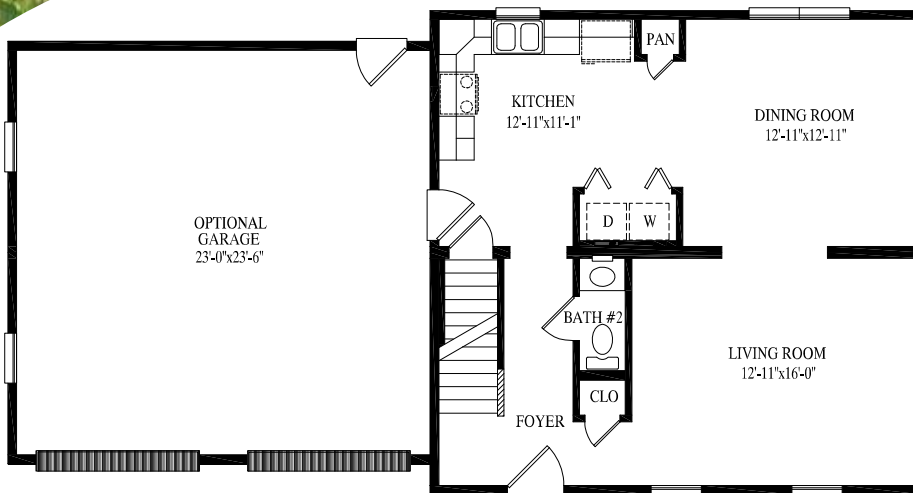


Two-Story



Made in USA

WATERFORD

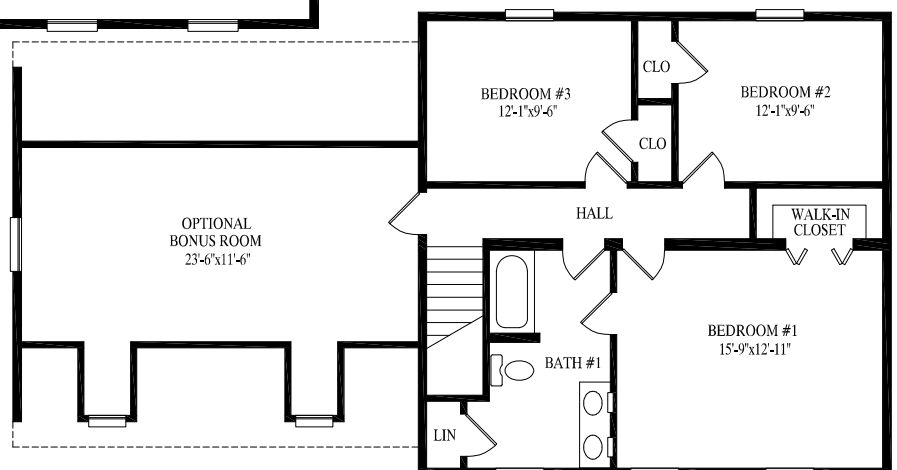


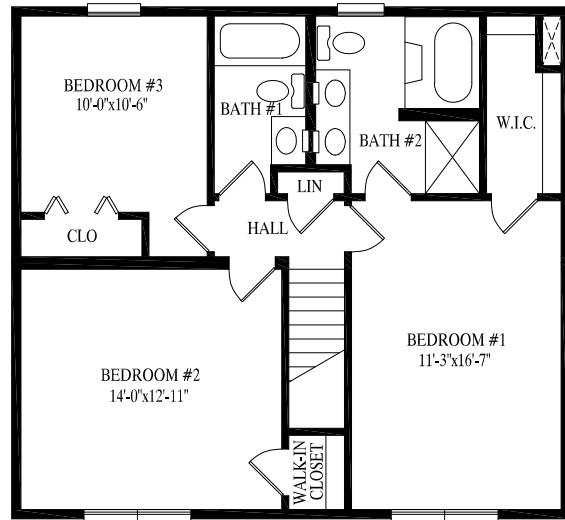
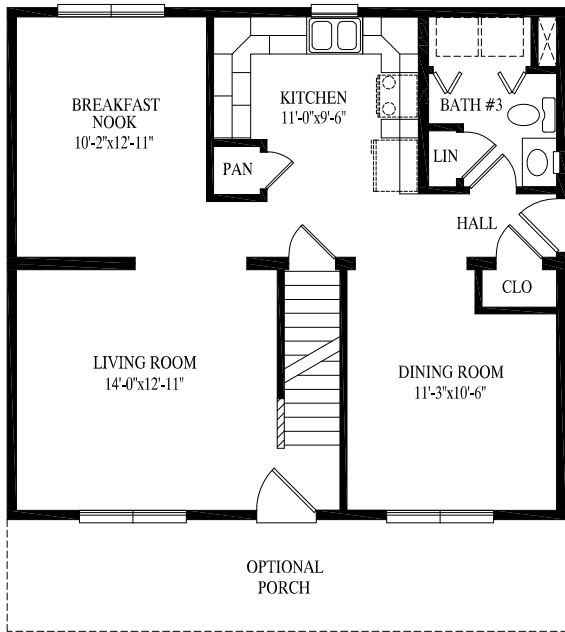
Waterford

27' 6" x 28'
770 sq. ft. 1st floor

27' 6" x 28'
770 sq. ft. 2nd floor

1540 total sq. ft.





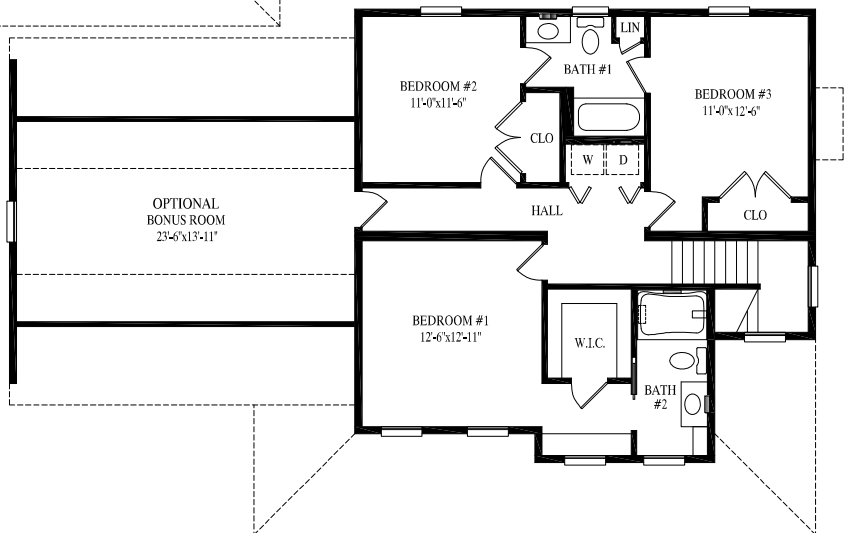
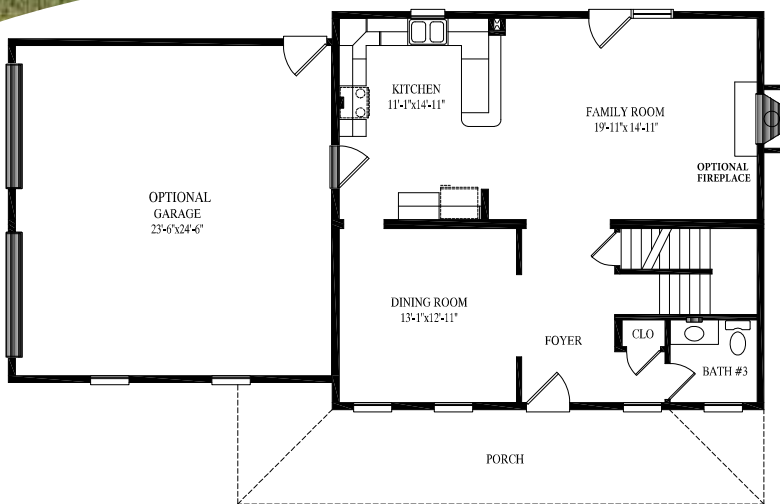
Klondike

27' 6" x 30'
 825 sq. ft. 1st floor
 27' 6" x 30'
 825 sq. ft. 2nd floor
 1650 total sq. ft.



KLONDIKE

HOLBROOK



Holbrook

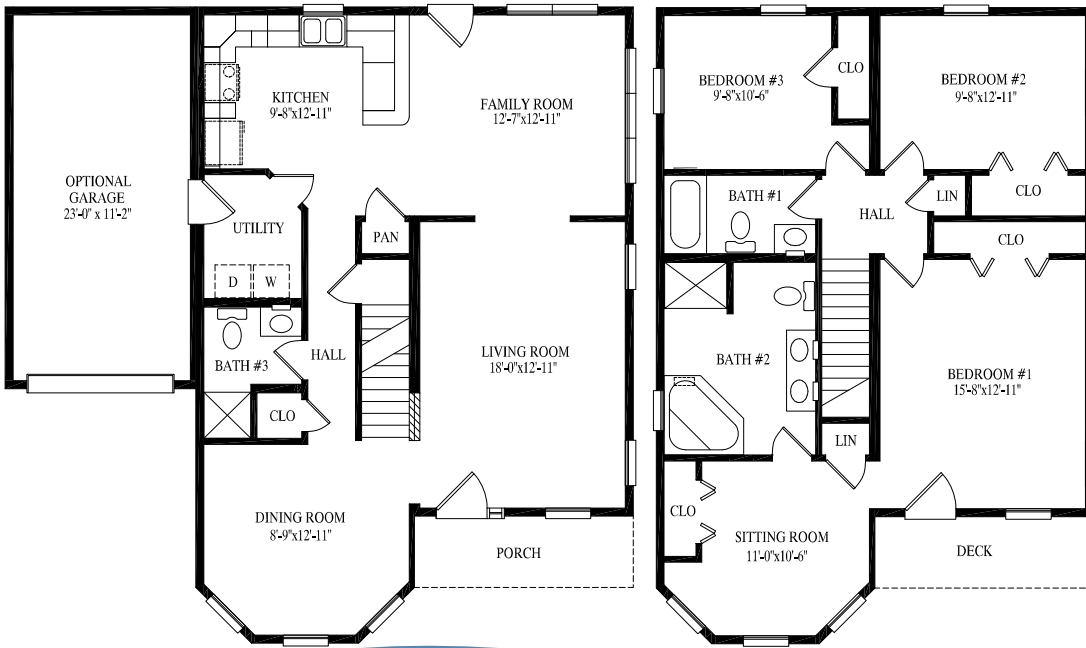
29' 6" x 32'

944 sq. ft. 1st floor

31' 6" x 32'

923 sq. ft. 2nd floor

1867 total sq. ft.



McKenna

27' 6" x 32' / 40'
978 sq. ft. 1st floor

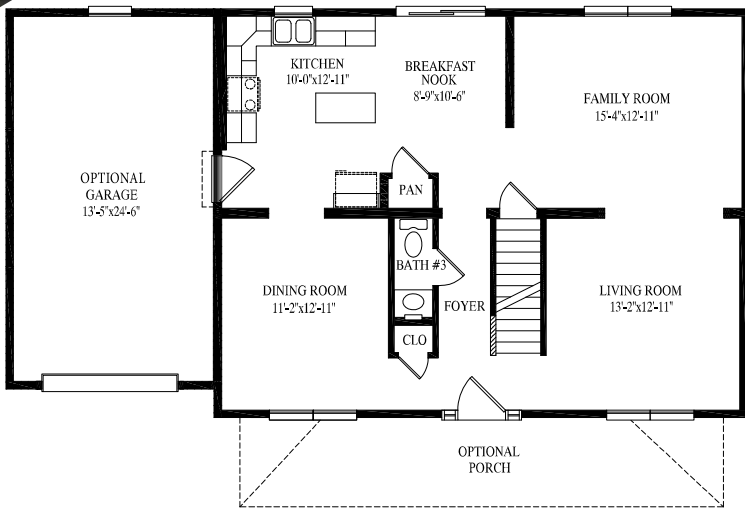
27' 6" x 32' / 40'
978 sq. ft. 2nd floor

1956 total sq. ft.



McKENNA

BROOKVILLE



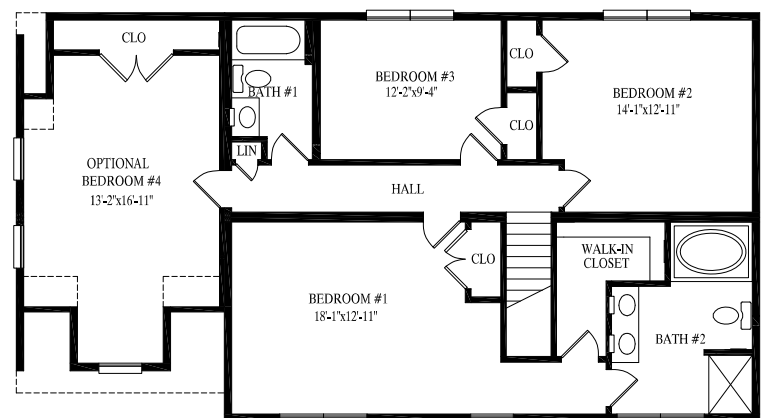
Brookville

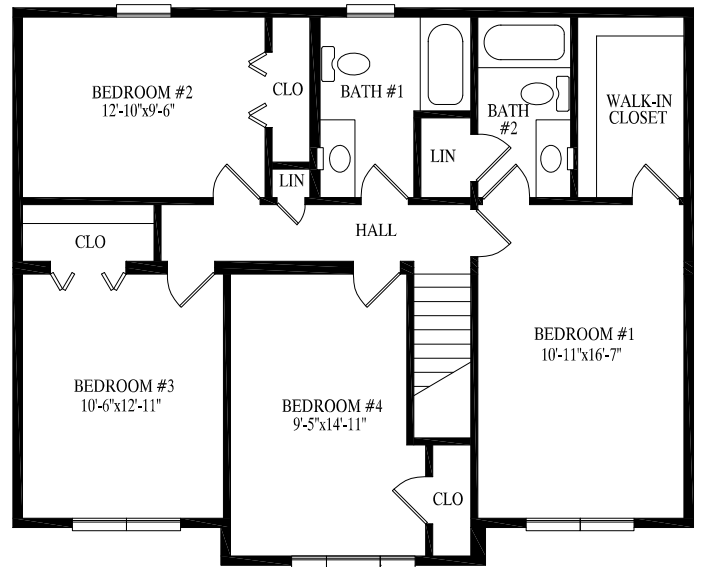
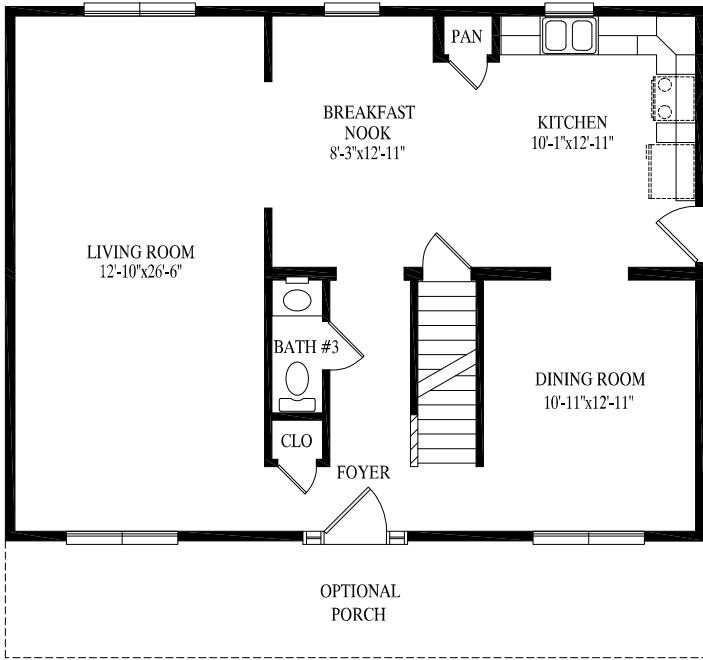
27' 6" x 36'
990 sq. ft. 1st floor

27' 6" x 36'
990 sq. ft. 2nd floor

1980 total sq. ft.

2280 total sq. ft.
with optional garage and 4th bedroom





Morris

27' 6" x 36'
990 sq. ft. 1st floor

29' 6" x 36'
1018 sq. ft. 2nd floor

2008 total sq. ft.



MORRIS

BRIGHTON

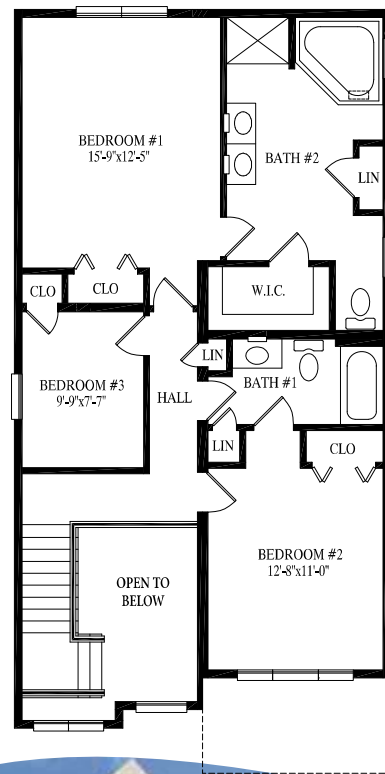
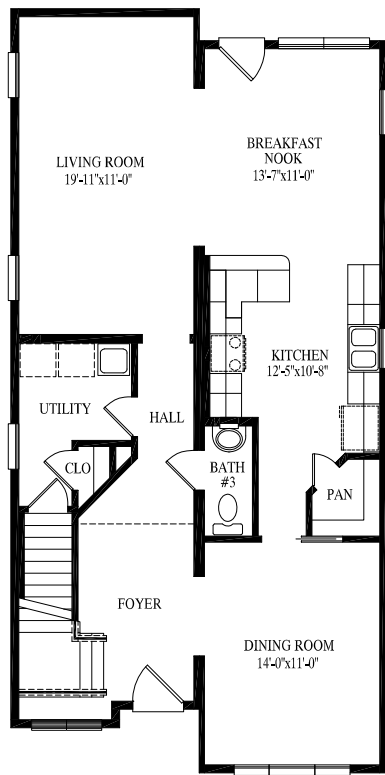


Brighton

27' 6" x 40'
1100 sq. ft. 1st floor

27' 6" x 40'
936 sq. ft. 2nd floor

2036 total sq. ft.



Delaware

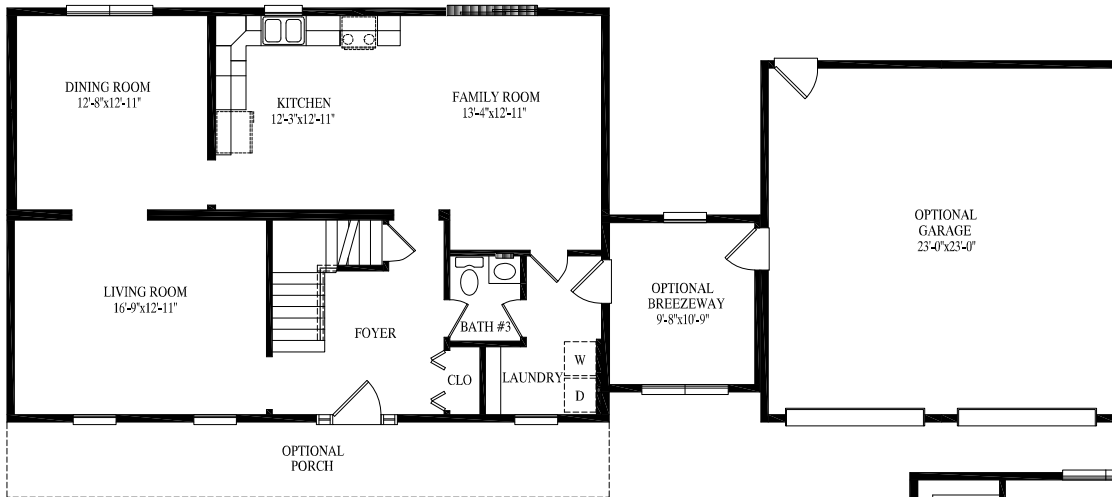
23' 8" x 45' 2"
1073 sq. ft. 1st floor

23' 8" x 43' 3"
1026 sq. ft. 2nd floor

2099 total sq. ft.

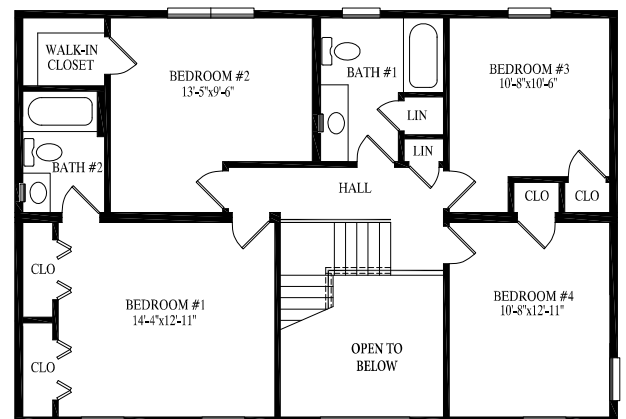
DELAWARE

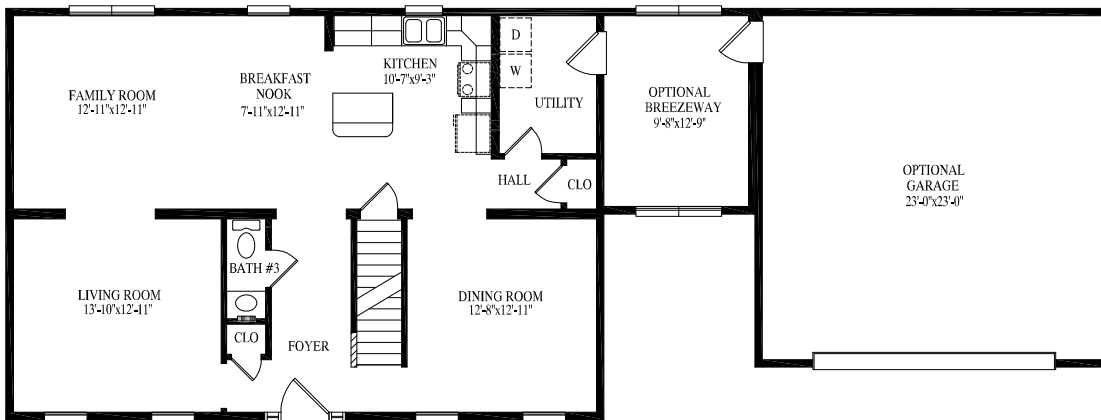
HELENA



Helena

27' 6" x 40'
 1100 sq. ft. 1st floor
 27' 6" x 40'
 1100 sq. ft. 2nd floor
 2200 total sq. ft.



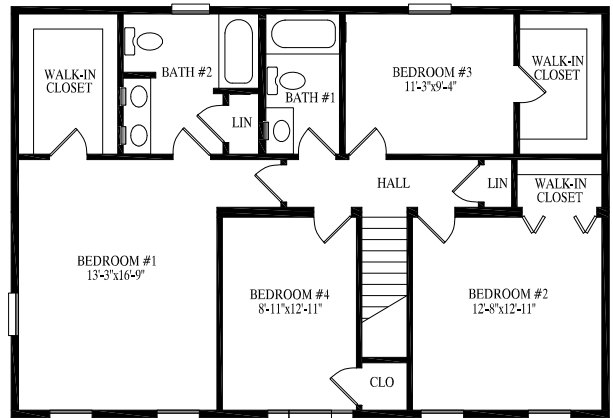


Niagara

27' 6" x 40'
1100 sq. ft. 1st floor

27' 6" x 40'
1100 sq. ft. 2nd floor

2200 total sq. ft.



Niagara

MONROE

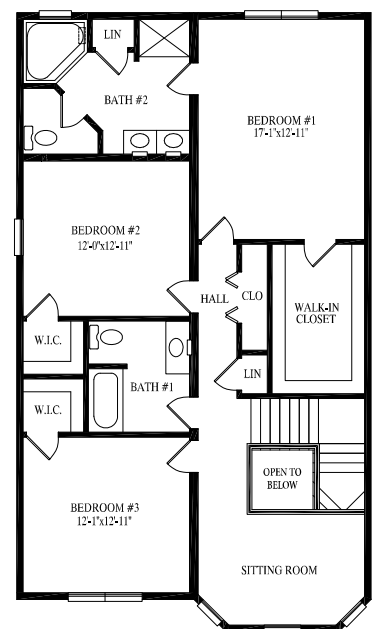
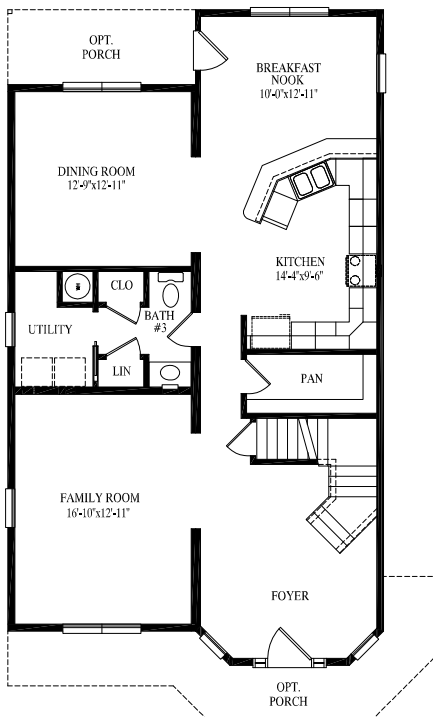


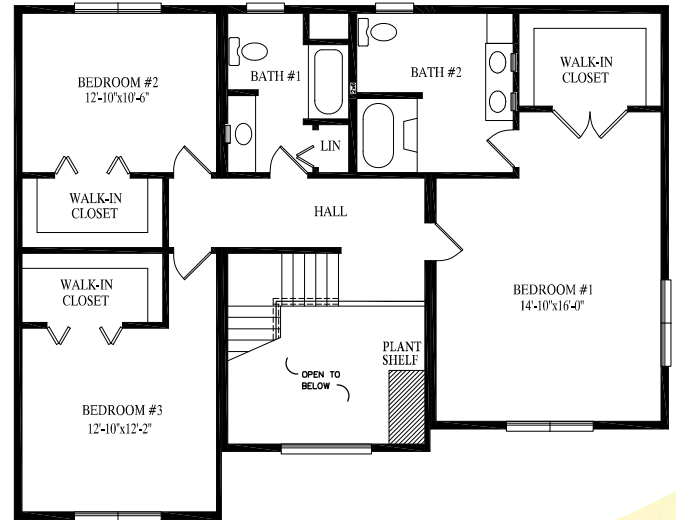
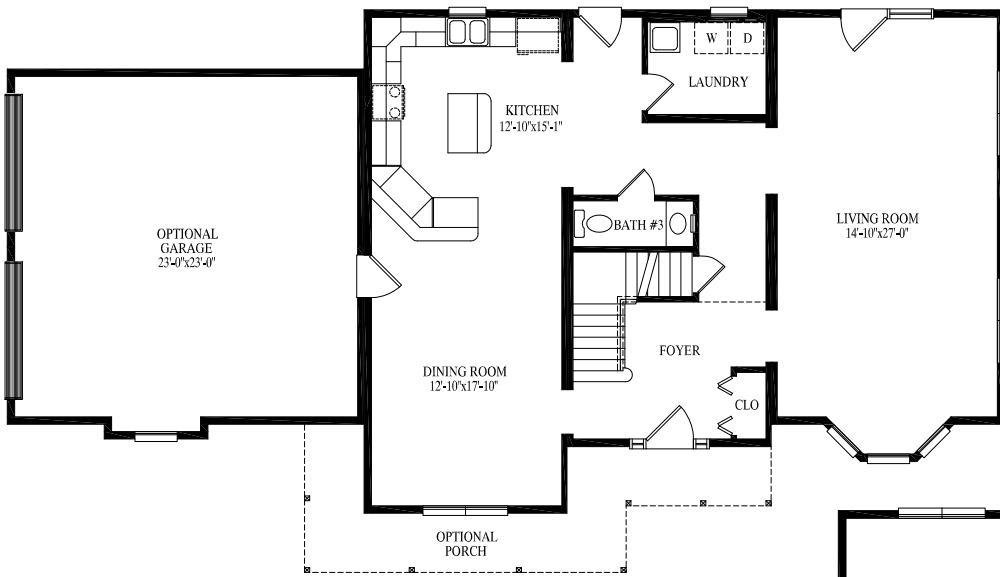
Monroe

27' 6" x 40' / 48'
1204 sq. ft. 1st floor

27' 6" x 45' 6" / 48'
1280 sq. ft. 2nd floor

2484 total sq. ft.





Berkshire

34' x 43' 3"
1331 sq. ft. 1st floor

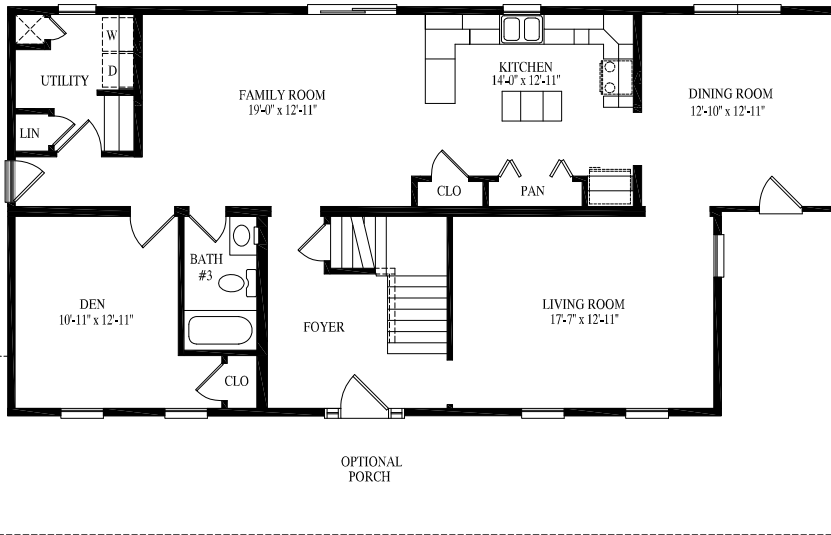
34' x 43' 3"
1315 sq. ft. 2nd floor

2646 total sq. ft.



BERKSHIRE

MONTGOMERY

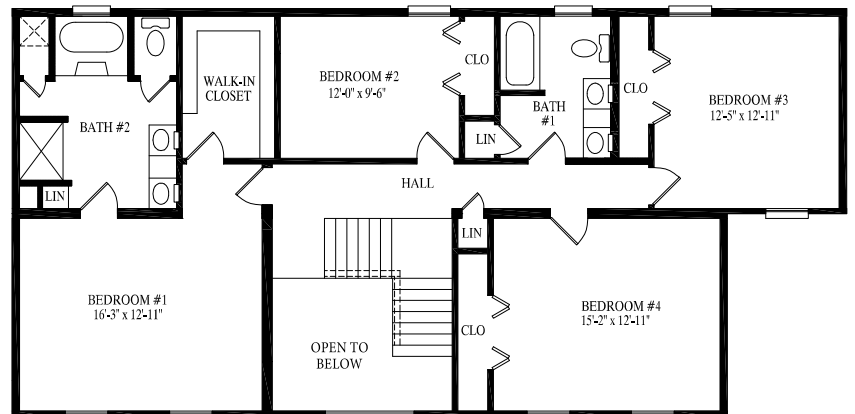


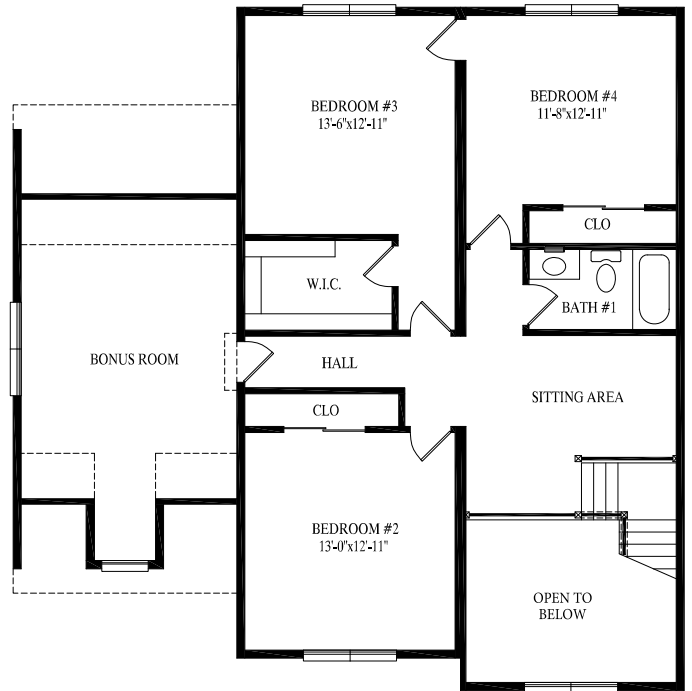
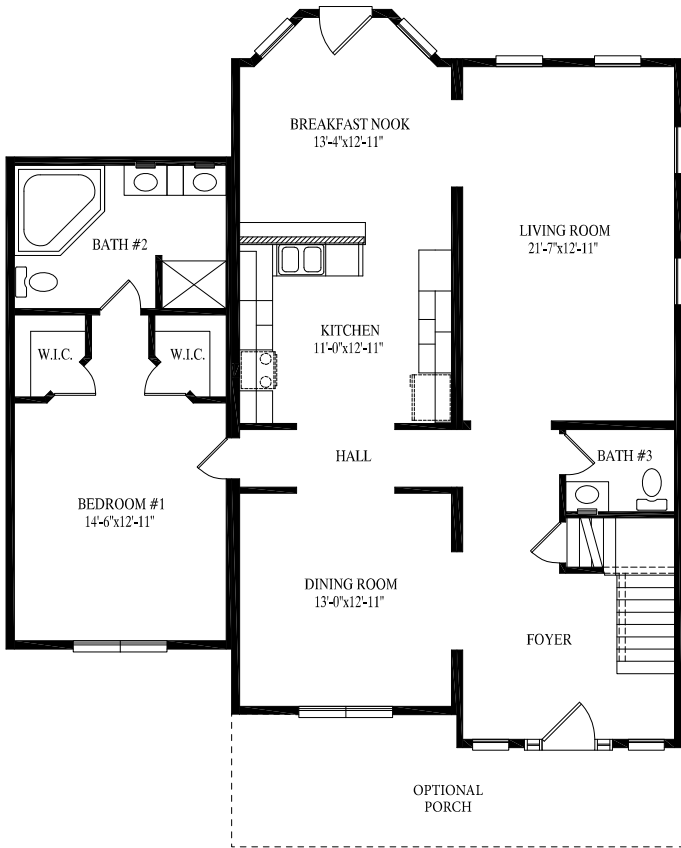
Montgomery

27' 6" x 56'
1430 sq. ft. 1st floor

27' 6" x 56'
1430 sq. ft. 2nd floor

2860 total sq. ft.





Hilshire

45' x 41' 3"
1566 sq. ft. 1st floor

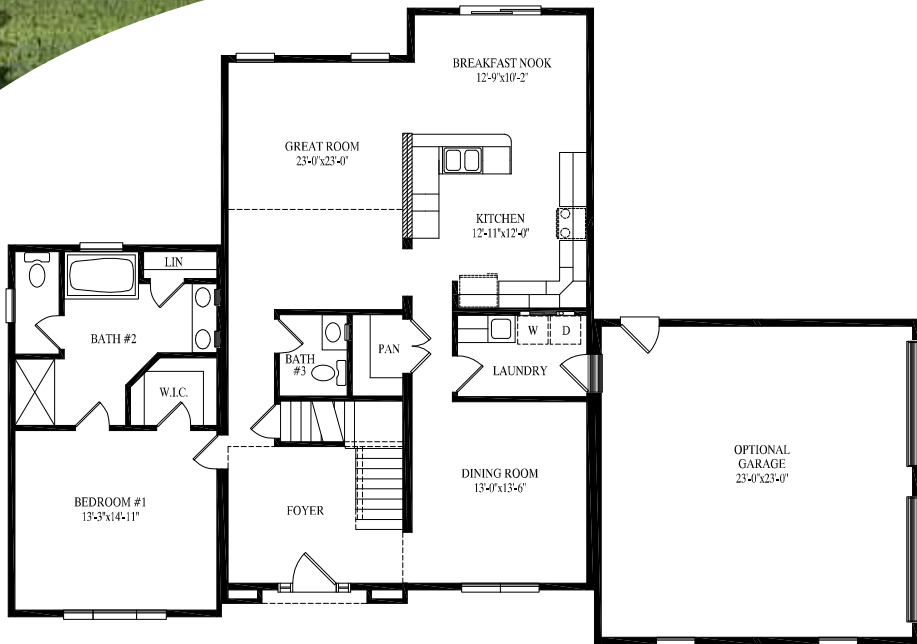
42' x 41' 3"
1128 sq. ft. 2nd floor

2694 total sq. ft.



HILSHIRE

BROOKMERE



Brookmere

45' x 43' 3"
1581 sq. ft. 1st floor

40' 6" x 43' 3"
1148 sq. ft. 2nd floor

2729 total sq. ft.

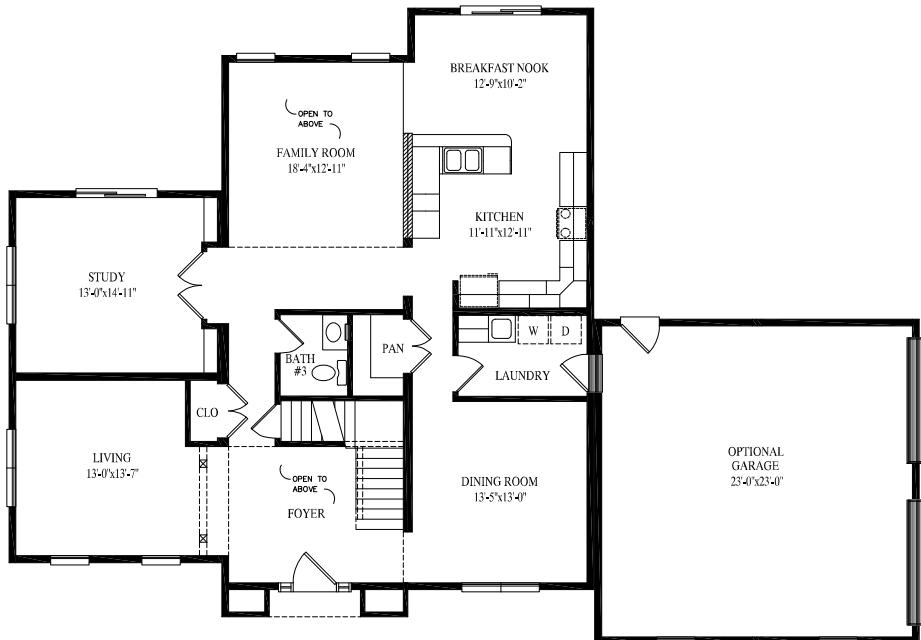


Springfield

45' x 43' 3"
1582 sq. ft. 1st floor

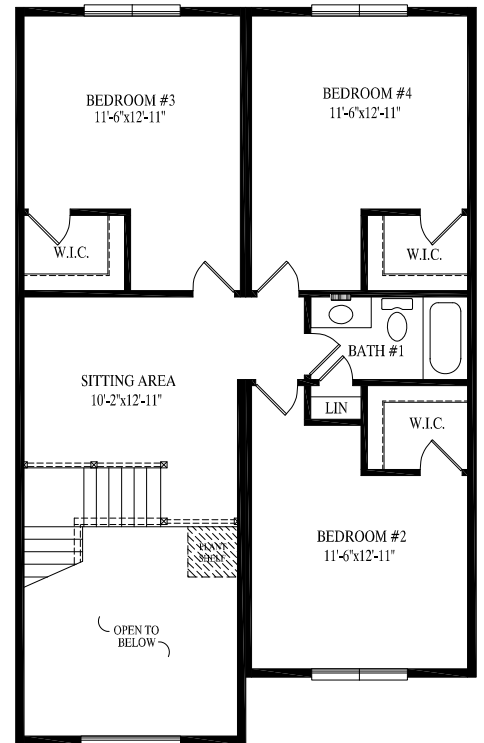
45' x 43' 3"
1582 sq. ft. 2nd floor

3164 total sq. ft.



SPRINGFIELD

WILLOW



Willow

53' x 55'
2191 sq. ft. 1st floor

44' x 27' 6\"/>
1155 sq. ft. 2nd floor

3346 total sq. ft.

Popular Exterior Options...



Single Unit Extension



Bump Out



Reverse Gable



Reverse Gable w/Extension



Dormers



Set Back



Decorative Shingle Return



Shed Dormer



Porch Roof

Great Homes Start With Quality Products...



NOTE: All renderings are artist's concepts only and may vary from actual home.



Professional Building Systems, Inc.

200 Custom Avenue
Middleburg, PA 17842
Phone 800-837-4552
info@pbsmodular.com
www.pbsmodular.com

*Professional Building Systems is a division of
Modular Building Systems of PA
www.modularbuildingsystemsofpa.com*

Your PBS Builder/Developer

(This area is intentionally left blank for the builder/developer to provide their name and contact information.)

Builders/Developers are not agents of Professional Building Systems.